

**A** mm (inch)

**B**

**i** Cabinet mounting

**C**

**D** -WEM, -WEB

**i** ✓ Plastic Cabinet only

**i** ✓ Metal Cabinet

**i** -WEM, -WEB

TCP/IP Reset Button

Status-LED

**i** -ETM, -ETB

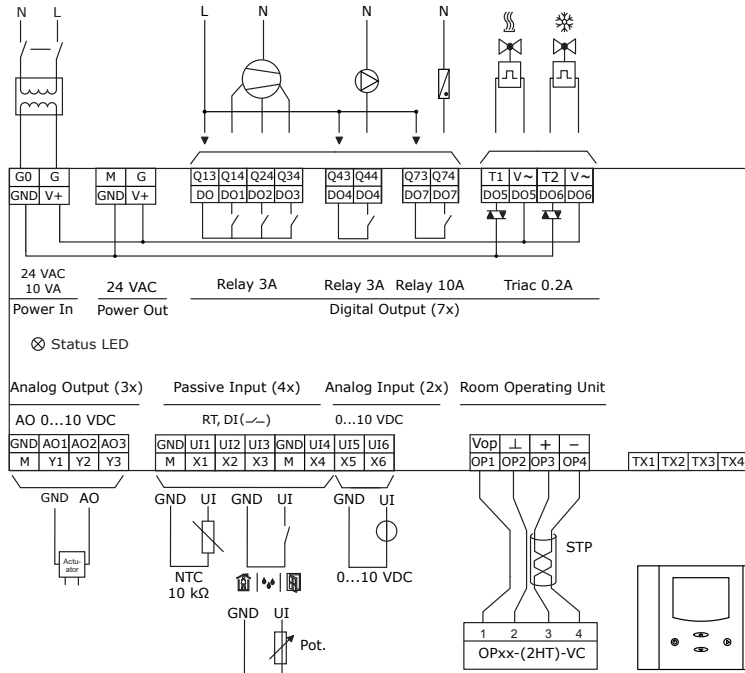
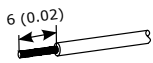
TCP/IP Reset Button

Status-LED

Network

## E 1 24 VAC

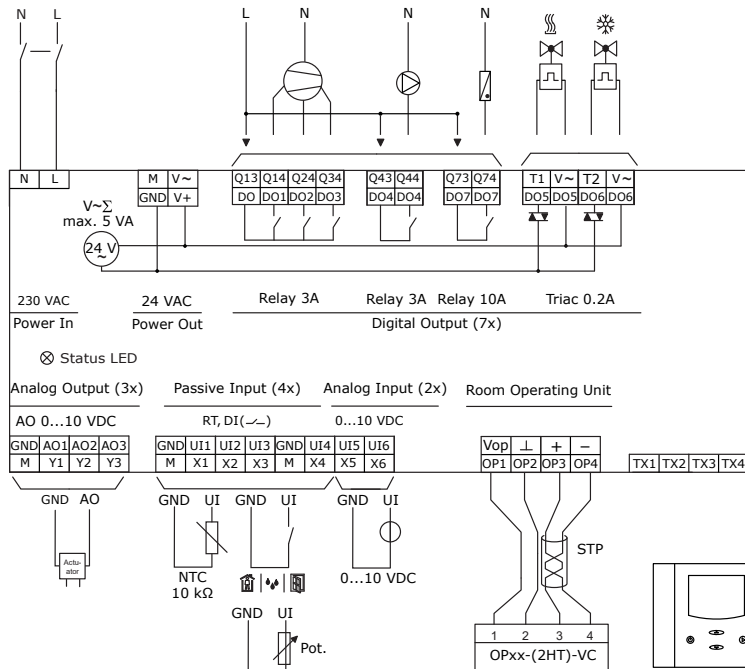
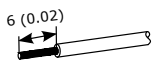
⚠ G0 = M = GND



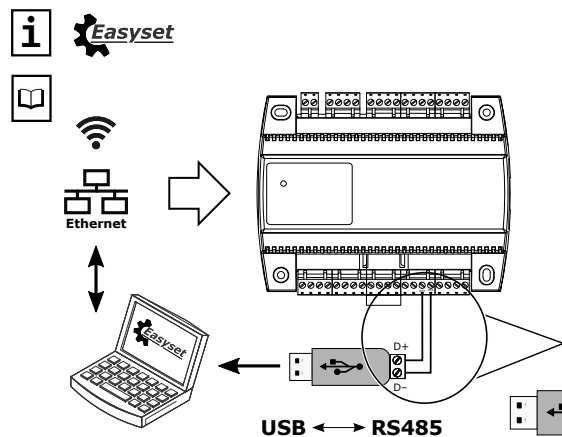
OPT1-xx  
OPA2-xx

## E 2 230 VAC

⚠ M = GND



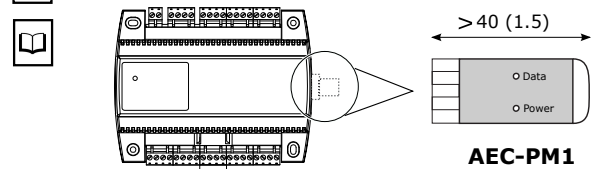
OPT1-xx  
OPA2-xx



www.vectorcontrols.com



## AEC-PM1



## Master-Slave (max. 8x TCX2, 1x OPxx-VC)

