

AMB-006 Surface mounting connection box

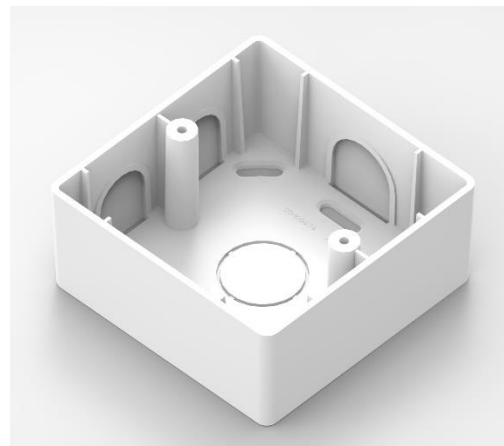
AMB-006 is used for surface installation of light switches, wall mounted controllers, sensors and power plugs. The box features two device mounting holes with 60 mm horizontal distance from each other. The box may be used to install the TRA and TCI-W V2 product line manufactured by Vector Controls.

Features

- For surface mounting of wall mounted controllers, thermostats and sensors
- Embedded depth 33 mm (1.3 in)
- White flame retardant PC+ABS plastic

Applications

- Surface mounting connection box for TRA and TCI-W V2



Ordering information

Product Name	Product No.	Type	Size	Weight
AMB-006	40-510101	Surface mounting box	82 x 82 x 36 mm (3.2 x 3.2 x 1.4 in)	41 g

Technical Specifications

Housing materials	White plastic	Flame retardant PC+ABS plastic (UL94 class V-0)
General	Dimensions (H x W x D)	36 x 82 x 82 mm (1.4 x 3.2 x 3.2 in)
	Weight (including package)	49 g (1.7 oz)

Dimension mm (inch)

